



**PETRUS  
GROUP**

## ULTRA LUXURIOUS CONDO

**Sotheby's**  
INTERNATIONAL REALTY

Canada

300 Randall Street, Unit #202, Oakville  
2 BED 2+1 BATH 2,418 SQ.FT.



# 300 RANDALL STREET, UNIT #202, OAKVILLE

---

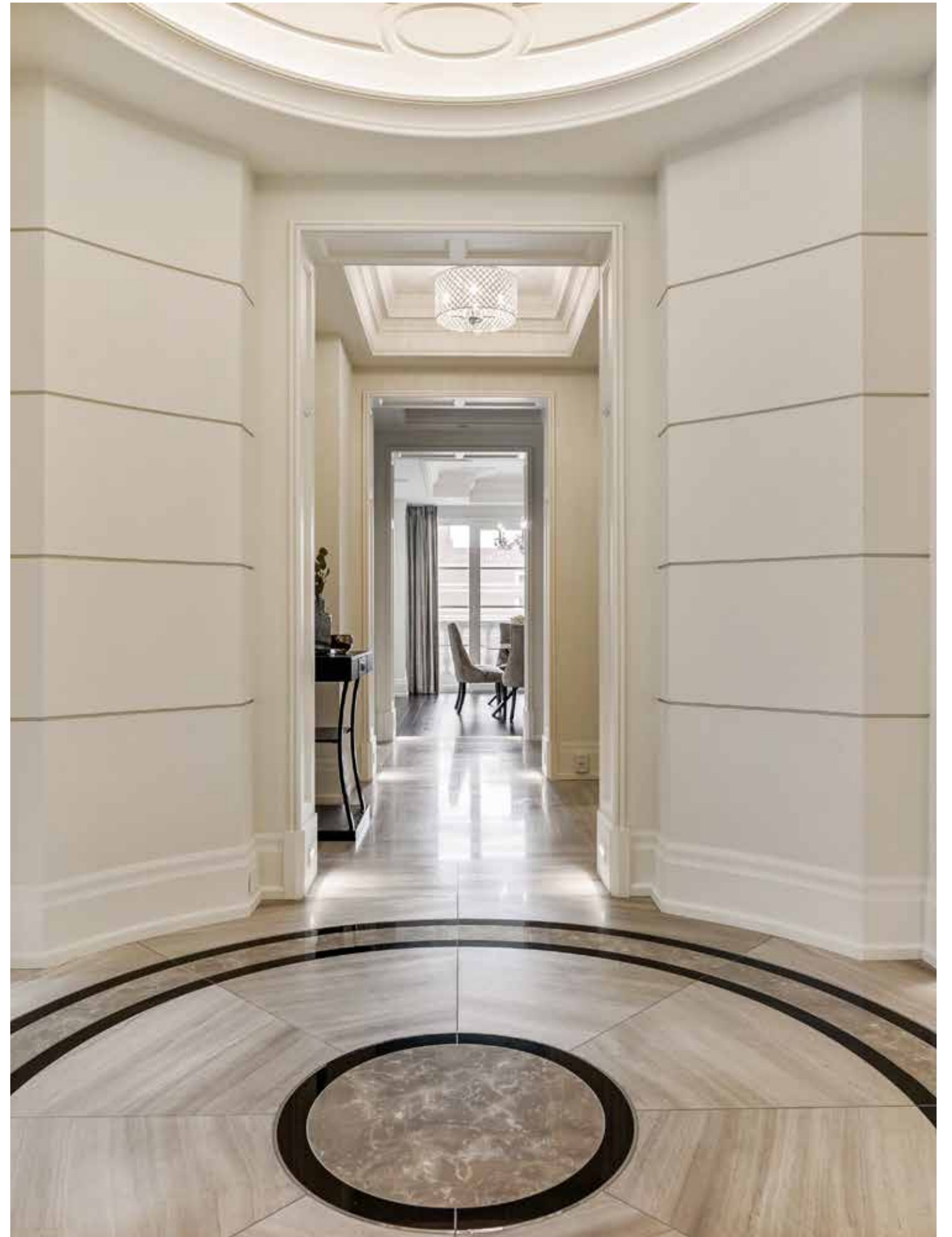
Built by award-winning developer Rosehaven Homes, The Randall Residences features interior design beyond compare and finishes by Ferris Rafauli, designer to the stars. With architecture by Richard Wengle, recognized as one of Toronto's premier architects, and inspired by the elegance of Paris, this suite features 2418 square feet of luxurious living space. Enter into the grand rotunda foyer with slab marble flooring and immediately stand in awe of the striking interior design.

Generously proportioned principal rooms include an open concept kitchen and family room. Paired with ultra high-end finishes for the most discerning buyer, such as a chef's Downsview kitchen with breakfast bar and marble countertops, featuring top-of-the-line gourmet appliances. The great room has a gas fireplace, an ideal space for entertaining. The principal bedroom has room enough for a seating area and offers a walk-in closet with black piano wood style cabinetry, and a 7-piece spa-inspired ensuite bathroom with separate water closet. Sporting hardwood floors, crown molding, coffered tray ceilings, and electric power shades throughout. This luxurious suite includes a Crestron automation system that controls your lighting, shades and security system. Two parking spaces and a large storage locker completes the picture.

The Randall is reminiscent of an elegant European residence, complete with a limestone facade and classical architecture. The common rooftop terrace is the perfect place to relax and enjoy a BBQ with friends and family. At street level is the famous Sotto Sotto Restaurant, a privately owned fitness club, and a beauty bar. Easy access to major highways. This boutique building is the epitome of ultra luxury condominium lifestyle, and located in the heart of beautiful downtown Oakville.





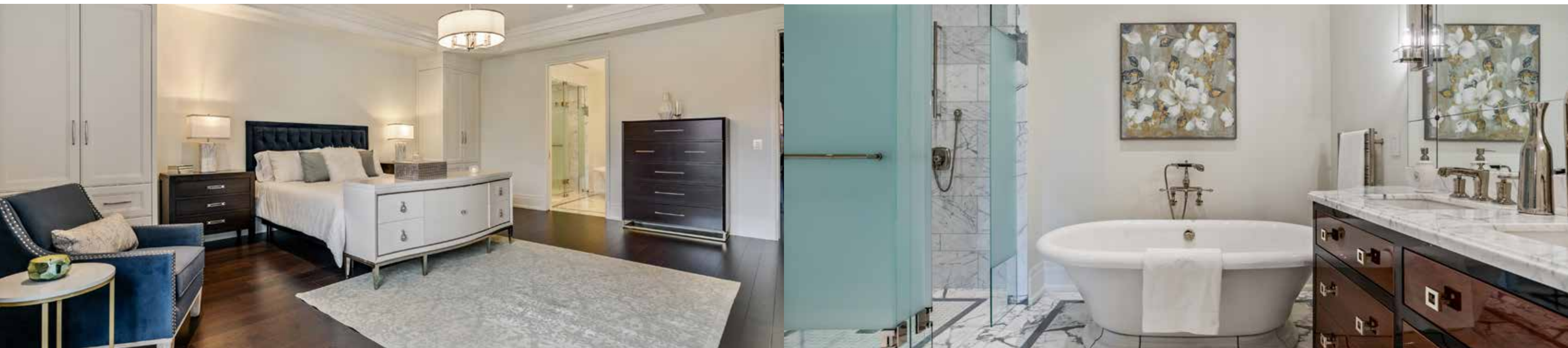












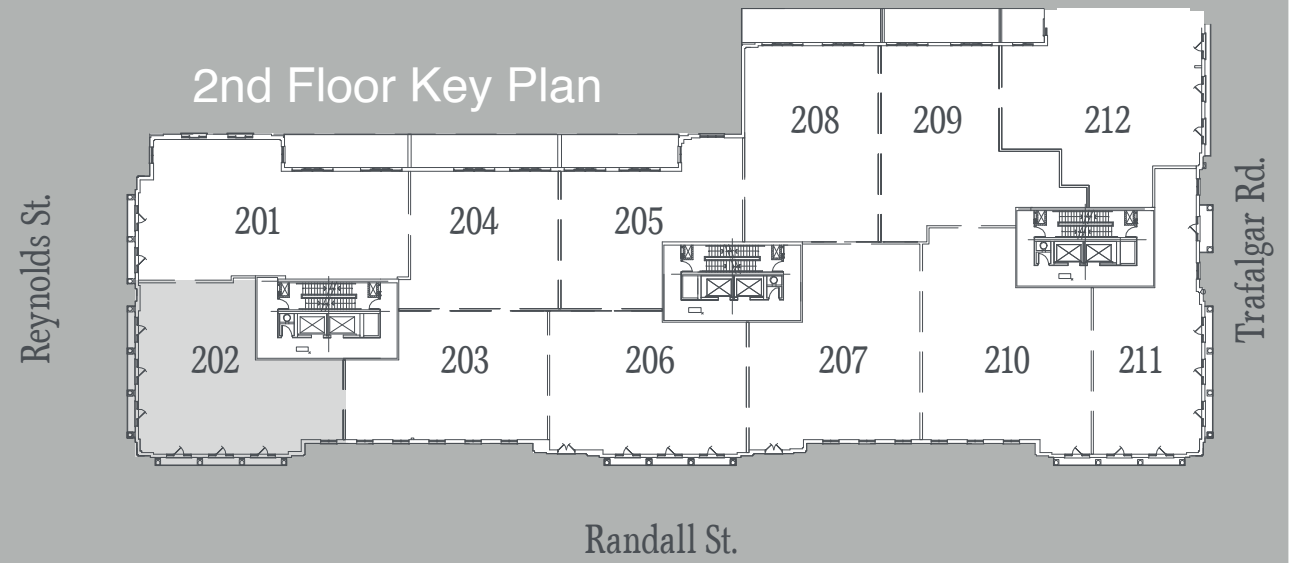






# The Galbraith

## 2nd Floor Key Plan



Suite 202 - 2,418 sq.ft. Plus 198 sq.ft. Terrace







PETRUS  
GROUP

# PETRUS GROUP

WWW.PETRUSGROUP.CA



2  
BEDROOMS

2+1  
BATHROOMS

2,418  
SQ FT LIVEABLE SPACE



## PETRUS ENGELBRECHT

Sales Representative, Senior Vice-President – Sales

c 905.467.2651

t 905.845.0024

[pengelbrecht@sothebysrealty.ca](mailto:pengelbrecht@sothebysrealty.ca)

© MMXVI Sotheby's International Realty Affiliates LLC. All Rights Reserved. Sotheby's International Realty® is a registered trademark licensed to Sotheby's International Realty Affiliates LLC. An Equal Opportunity Company. Equal Housing Opportunity. Sotheby's International Realty Canada, Brokerage. Real estate agency. Independently Owned & Operated.

E & O.E: This information is from sources which we deem reliable, but must be verified by prospective Purchasers and may be subject to change or withdrawal.

Nothing Compares